

ELDORADO PARKWAY AND FM 720

NWC and SWC of FM 720 and Eldorado Pkwy, Little Elm, Texas



GREENWAY INVESTMENT COMPANY

ESTABLISHED 1979

PROPERTY OVERVIEW

Commercial land at the intersection of recently expanded FM 720 and Eldorado Parkway. Easy connectivity to US 380, I-35 and FM 423. The Oak Point peninsula is seeing a larger amount of single family home development between the Spiritas Ranch, Prairie Oaks, Taylor Morrison and Wildridge communities.

PROPERTY SIZE

+/- 14.89 acres

AVAILABILITY

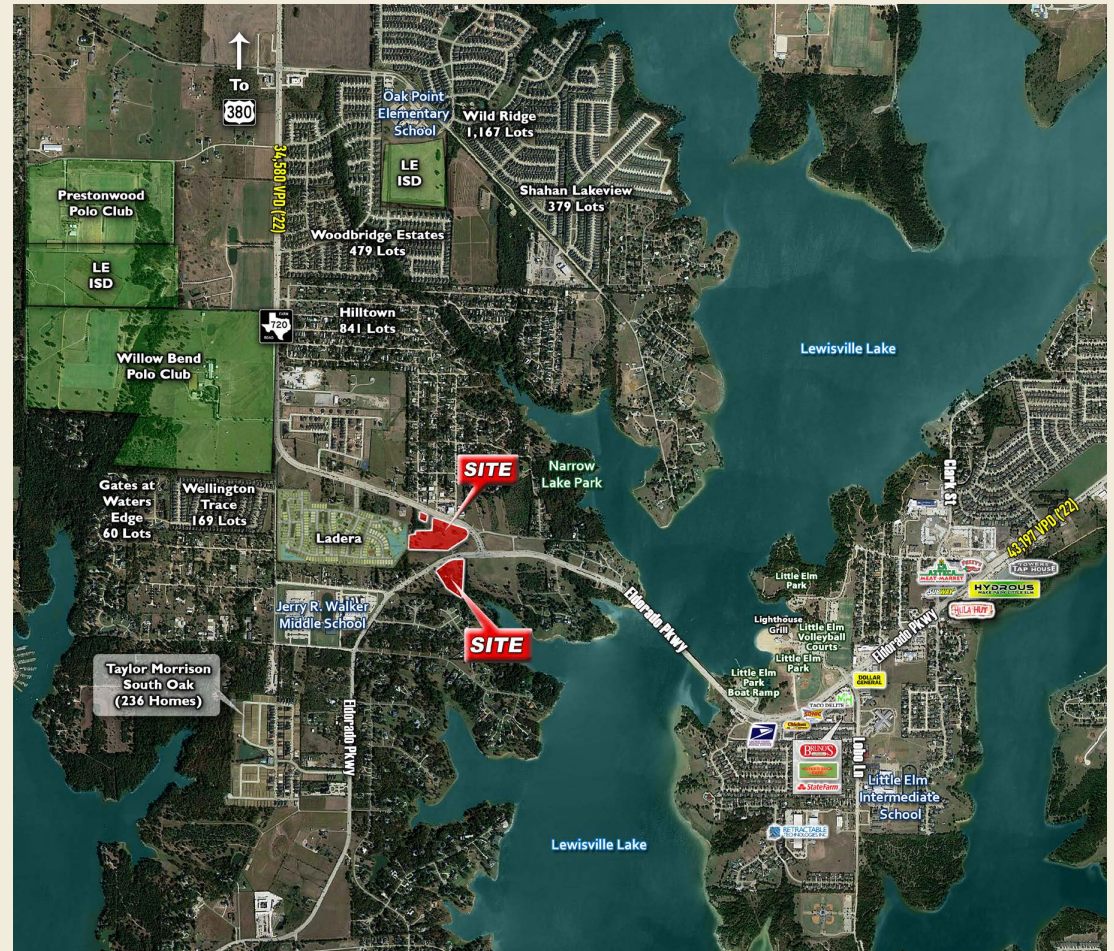
+/- 14.89 acres

TRAFFIC COUNTS

Eldorado Parkway	43,197 VPD Town of Little Elm '22
FM 720/Oak Grove Parkway	34,580 VPD Town of Little Elm '22

DEMOGRAPHICS

	1 mile	3 mile	5 mile
2021 Est. Population	2,545	32,470	128,777
5 Year Projected Growth	3.64%	3.03%	2.55%
Avg. HH Income	\$108,868	\$116,292	\$128,457
Median Home Value	\$292,788	\$306,186	\$308,431



RYAN PETTY | rpetty@greenwayinvestment.com | 214-699-4845 ext.2240

The information contained herein was obtained from sources deemed reliable; however, Greenway Investment makes no guarantees, warranties or representations as to the completeness or accuracy thereof. The presentation of this information is subject to errors; omissions; change of price; prior sale or lease; or withdrawal without notice.

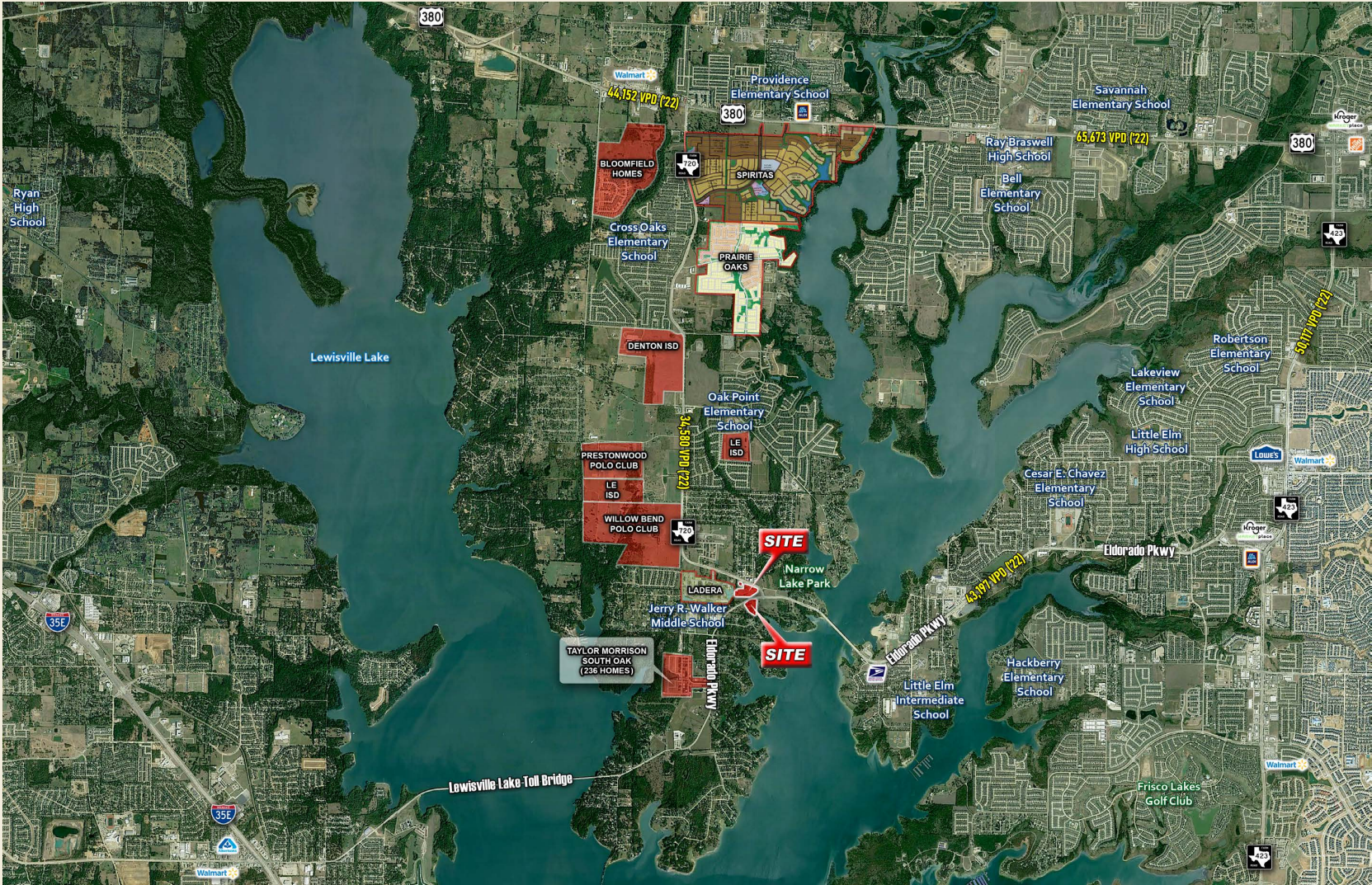
ELDORADO PARKWAY AND FM 720

NWC and SWC of FM 720 and Eldorado Pkwy, Little Elm, Texas



GREENWAY INVESTMENT COMPANY

ESTABLISHED 1979



RYAN PETTY | rpetty@greenwayinvestment.com | 214-699-4845 ext.2240

The information contained herein was obtained from sources deemed reliable; however, Greenway Investment makes no guarantees, warranties or representations as to the completeness or accuracy thereof. The presentation of this information is subject to errors; omissions; change of price; prior sale or lease; or withdrawal without notice.