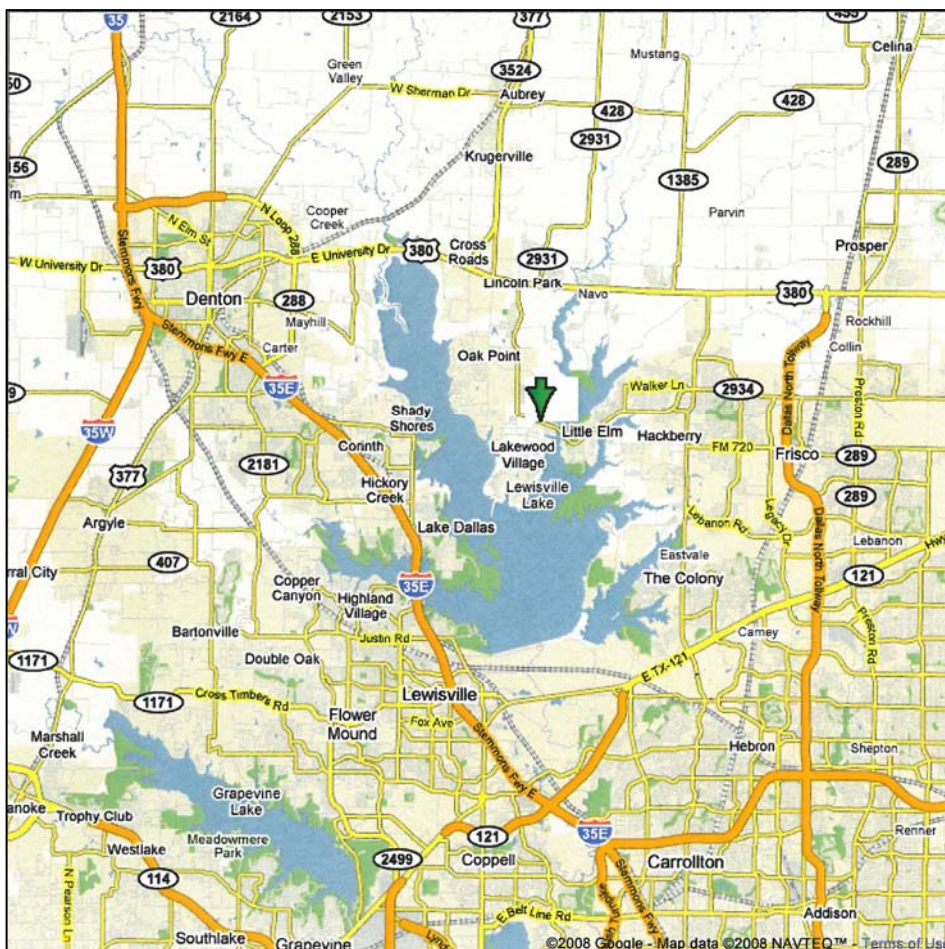




Eldorado Parkway @ Garza Lane Little Elm, Texas



Property Summary

Location: Southeast corner of Eldorado Parkway & Garza Ln.
Little Elm, Texas

Available Space: ± 29 Acres of Pad Sites & Retail

Zoning: C-1 Light Commercial
A-1 Single Family Residential

Area Development: NTTA has begun the design and development of the Lewisville Lake Toll Bridge, which upon its completion, will connect Swisher Road and Eldorado Parkway and Garza Lane, and will enable motorists to travel from IH 35E to the Dallas North Tollway.

Demographics (2005):	1 Mile	3 Mile	5 Mile
Population	4,287	19,605	44,245
Avg. HHI	\$86,222	\$86,932	\$82,017

Thomas Glendenning
214-880-9009 ext. 2232

tglendenning@greenwayinvestment.com

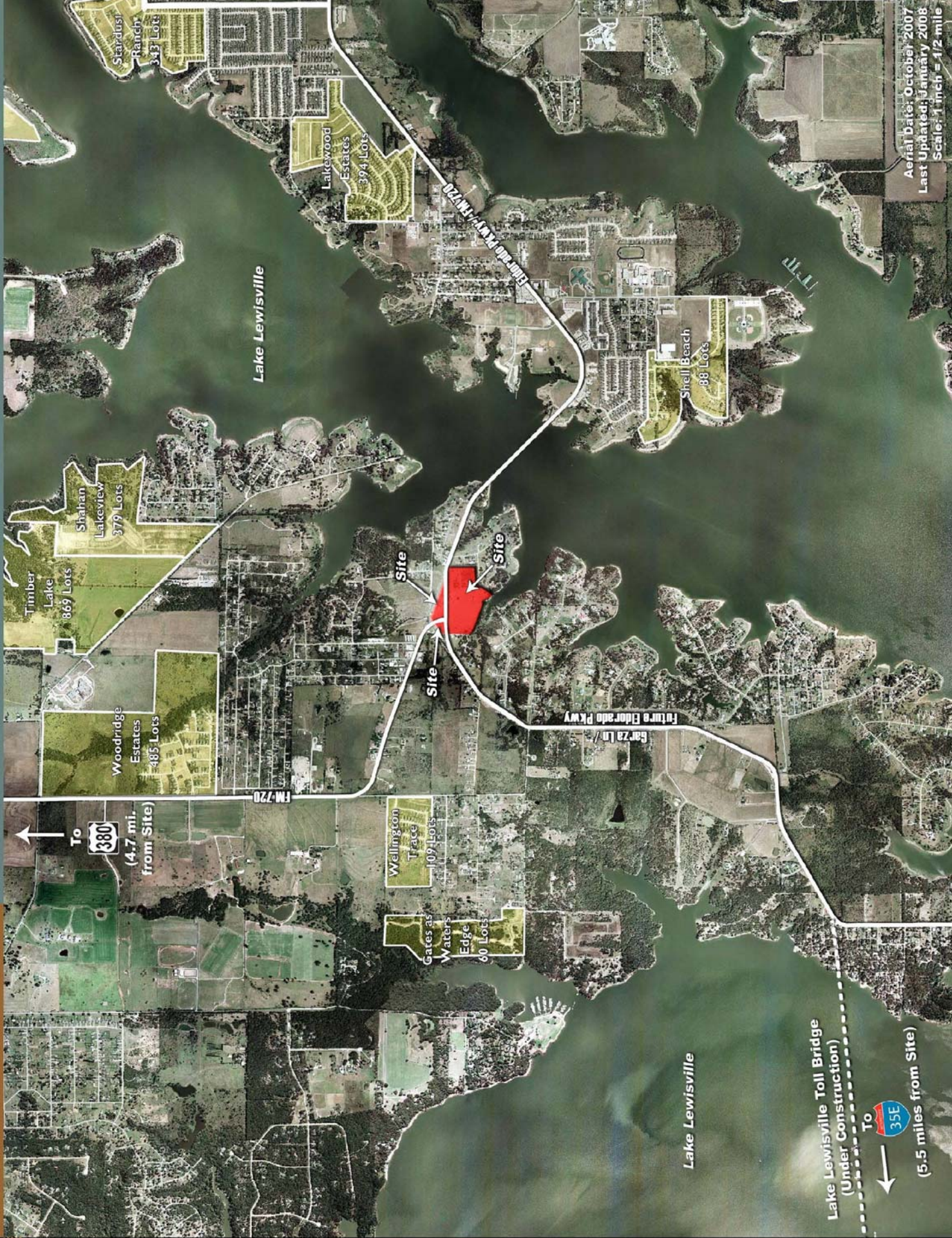
2808 Fairmount Street
Suite 100
Dallas, Texas 75201

WWW.GREENWAYINVESTMENT.COM



GREENWAY INVESTMENT COMPANY

2808 Fairmount, Ste. 100
Dallas, Texas 75201
Phone: 214-880-9009
Fax: 214-880-0188
www.greenwayinvestment.com



Aerial Date: October 2007
Last Updated: January 2008
Scale: 1 inch = 1/2 mile

Eldorado Pkwy & Garza Ln

Little Elm, Texas